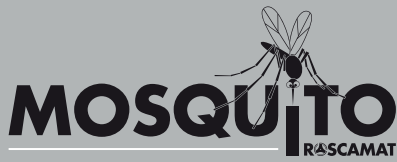




# MOSQUITO

ROSCAMAT®

Electric  
tapping  
arm  
machine



Tapping capacity:  
**M2 - M14 (M16)** 3 options

MOTOR DOUBLE SPEED:  
**300 - 600 rpm**

Tapping capacity:  
**M2 - M14 (M16 Al.)**

Maximum torque:  
**34 Nm**

MOTOR 1 SINGLE SPEED:  
**300 rpm**

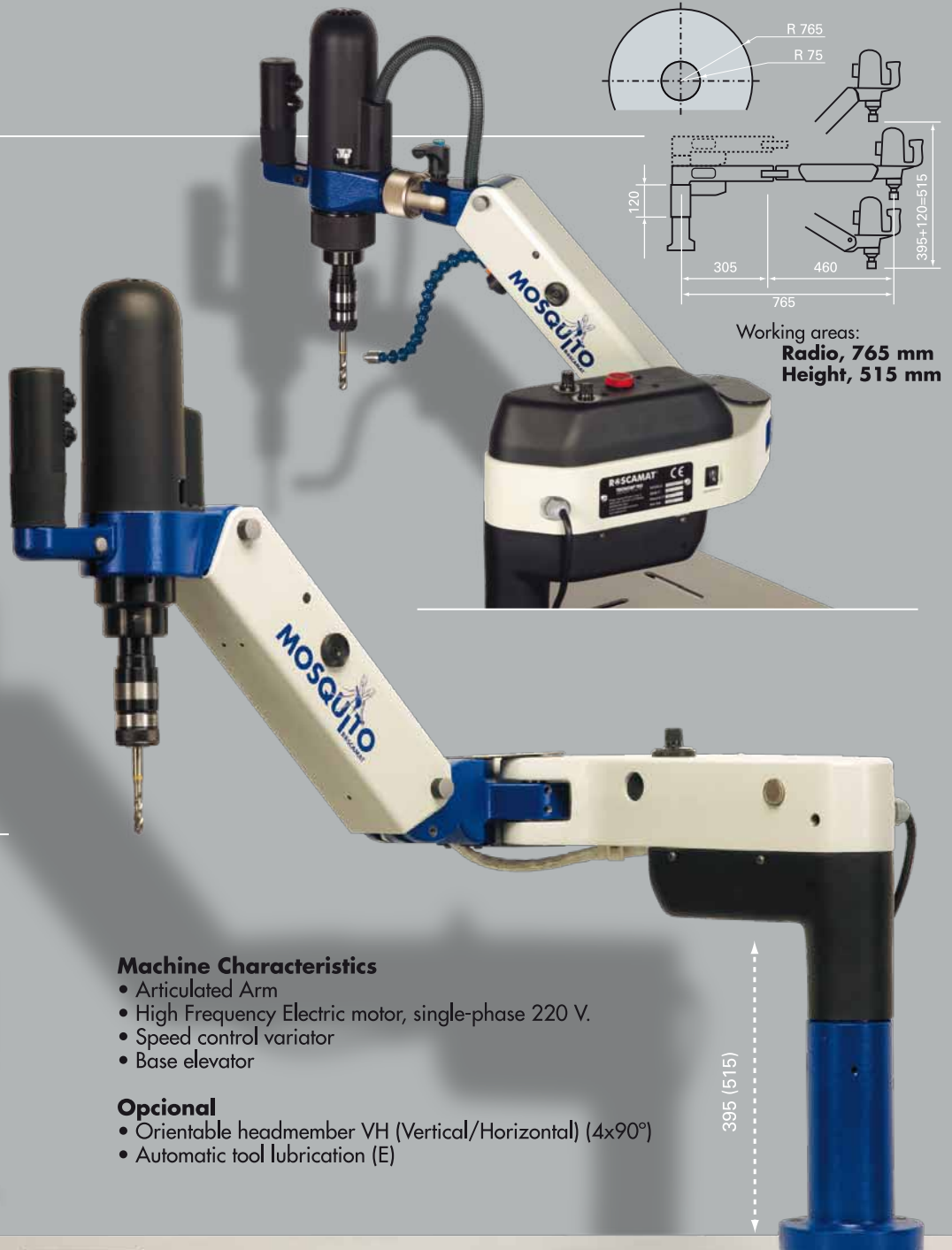
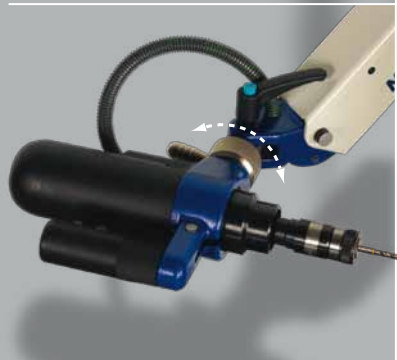
Tapping capacity:  
**M2 - M14 (M16 Al.)**

Maximum torque:  
**34 Nm**

MOTOR 1 SINGLE SPEED:  
**600 rpm**

Tapping capacity:  
**M2 - M10 (M12 Al.)**

Maximum torque:  
**16 Nm**



### Machine Characteristics

- Articulated Arm
- High Frequency Electric motor, single-phase 220 V.
- Speed control variator
- Base elevator

### Opcional

- Orientable headmember VH (Vertical/Horizontal) (4x90°)
- Automatic tool lubrication (E)

### Quick change toolholders, (Ø19 M2-M16)

- **With safety clutch** of adjustable torque to prevent tap breakage.
- **Without safety clutch** suitable for in operations like countersinking, screwing, reaming, etc.
- **Die-holders:** for external threads. Two types: Short / Long
- **Tapholder extension:** for pieces of difficult access.
- **Drill chuck device:** to drill soft materials (aluminium, foundry). Up to Ø8mm. max.



Clamp

Magnetic support Ø 200 mm

Table 850x850x850 mm.

Table 500x500 mm.